

COLLECTION HÉLIOS

ATELIER FÉVRIER



The collection is inspired by astronomy and celestial maps from the 15th century. It is an explosion of bright colors gathered around the golden and ardent glow of the sunlight translated into a visual feast.

ELISSE

COMPOSITION: 50% WOOL / 50% SILK

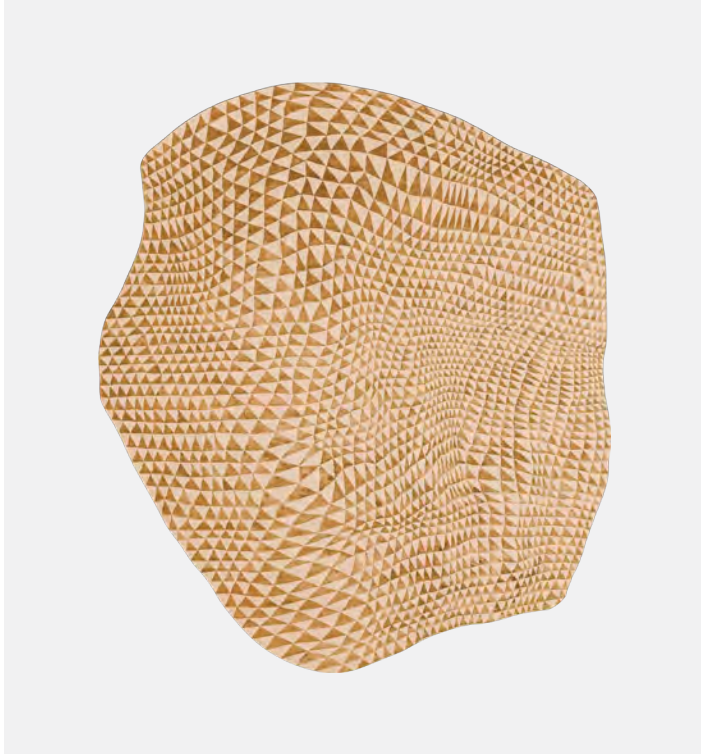
QUALITY: 100 KNOTS



ELISSE

COMPOSITION: 50% WOOL / 50% SILK

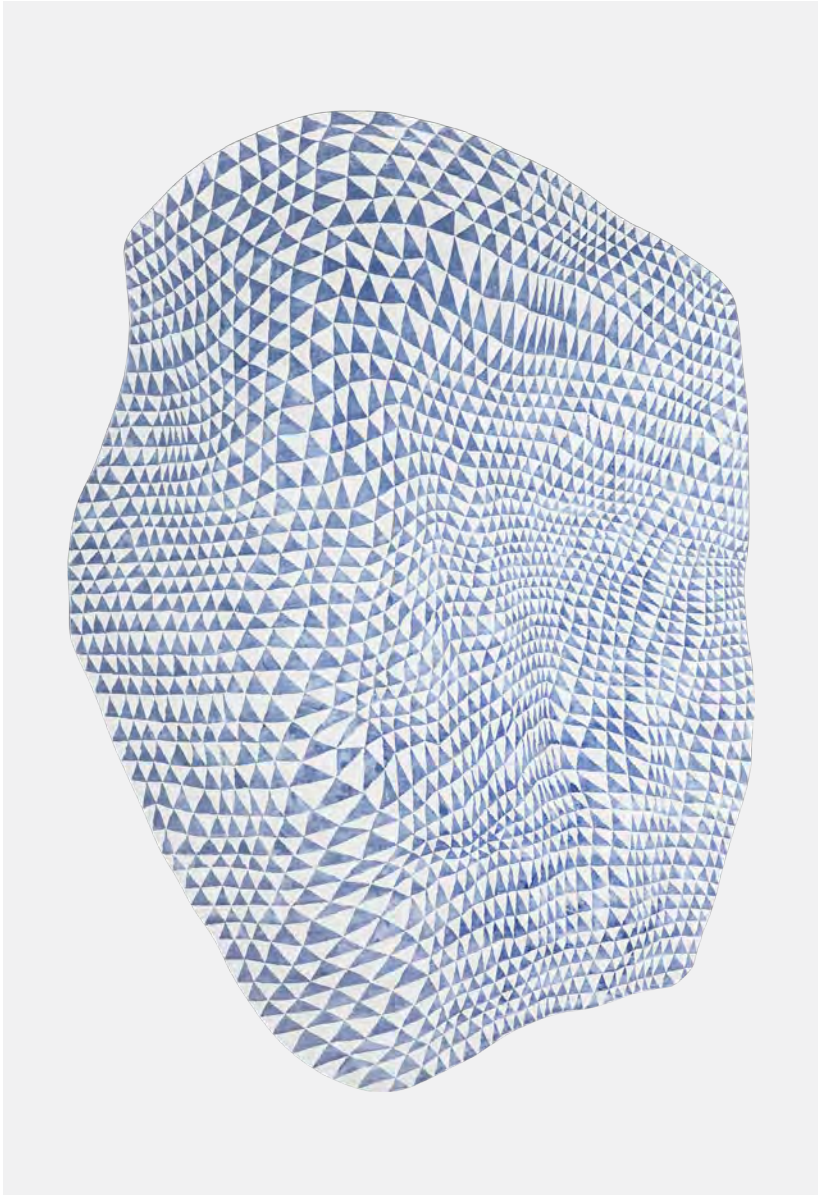
QUALITY: 100 KNOTS



ELISSE

COMPOSITION: 50% WOOL / 50% SILK

QUALITY: 100 KNOTS



ELISSE

COMPOSITION: 50% WOOL / 50% SILK

QUALITY: 100 KNOTS



ELISSE

COMPOSITION: 50% WOOL / 50% SILK

QUALITY: 100 KNOTS



ELISSE

COMPOSITION: 50% WOOL / 50% SILK

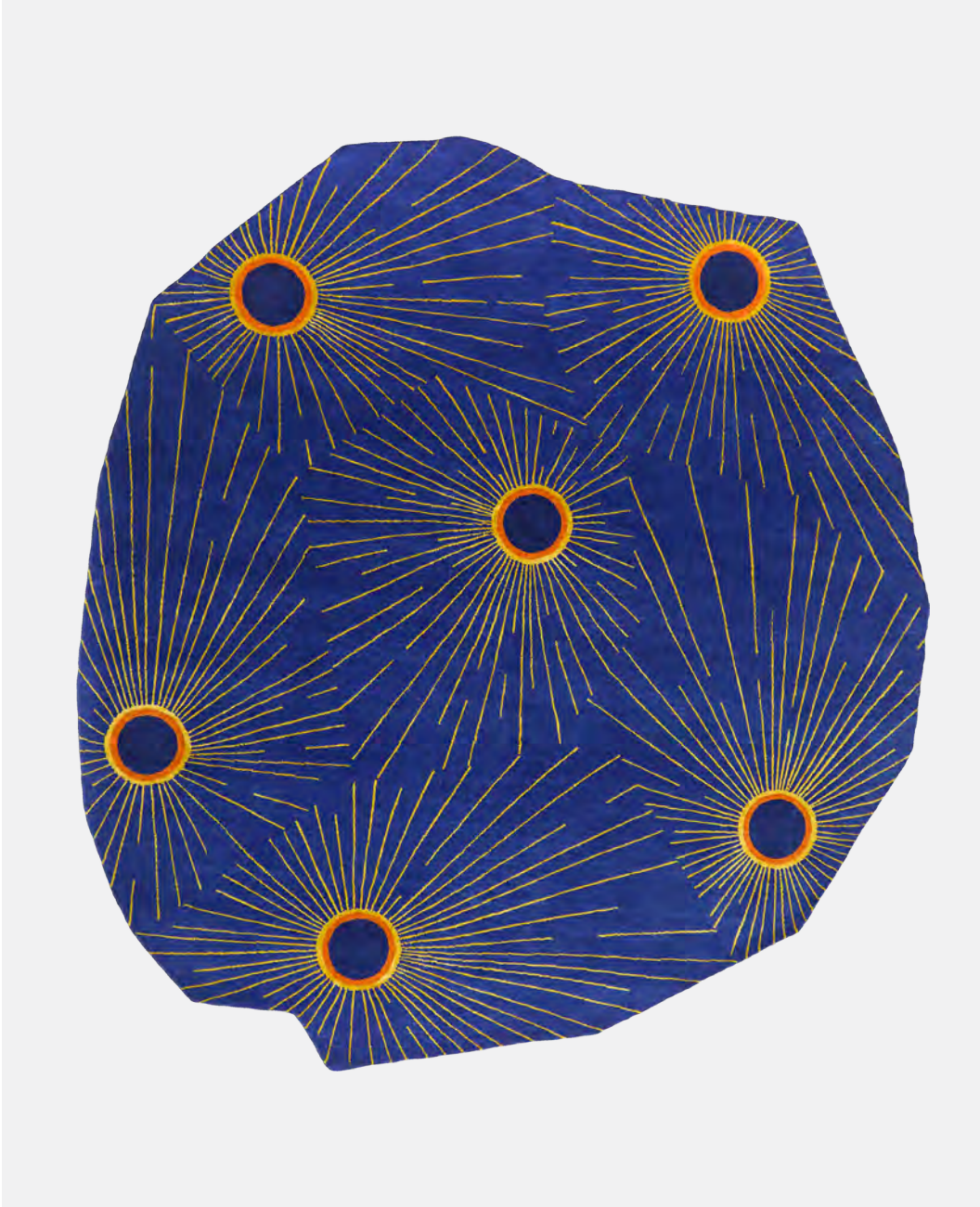
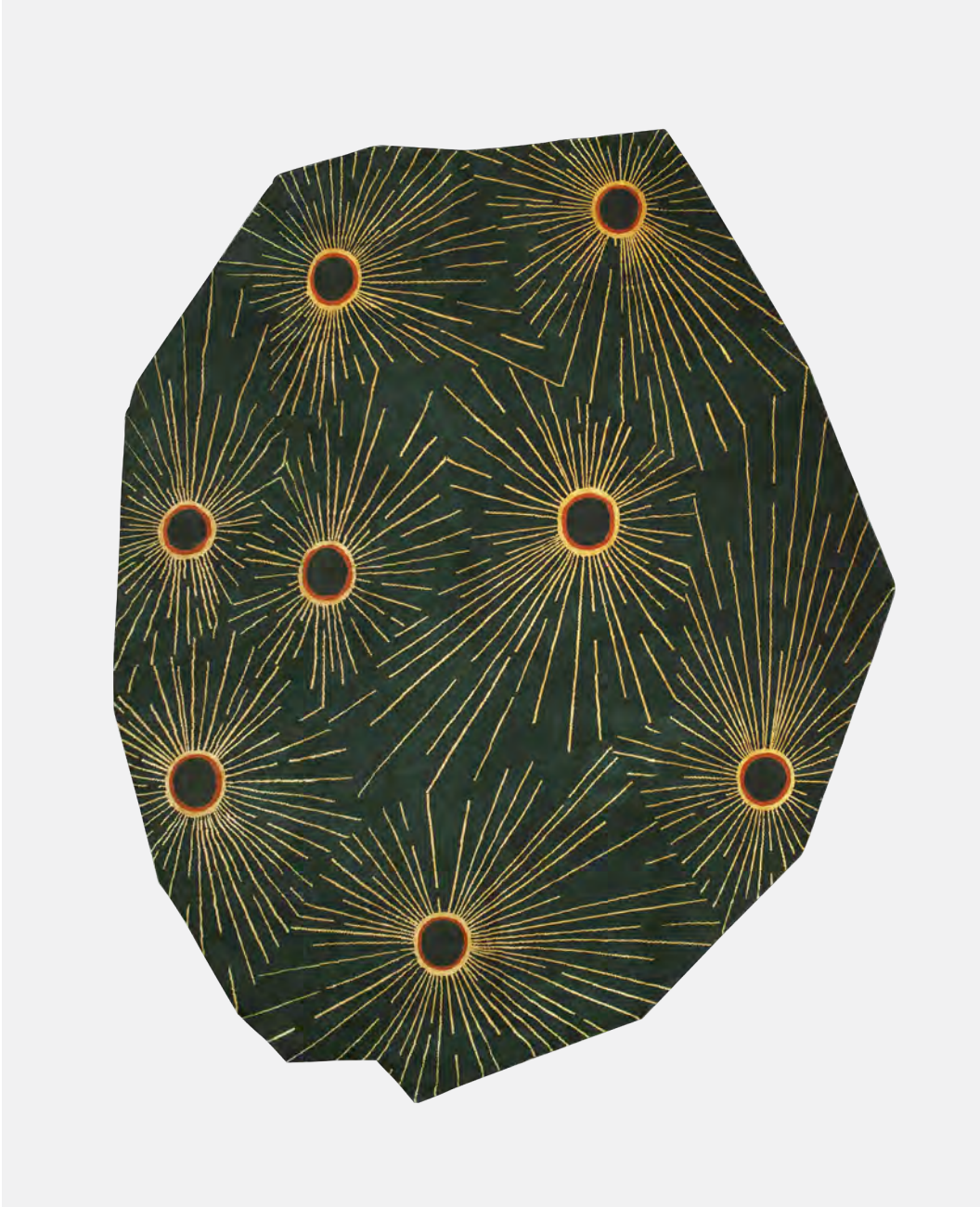
QUALITY: 100 KNOTS



SURYA

COMPOSITION: 75% WOOL / 25% SILK

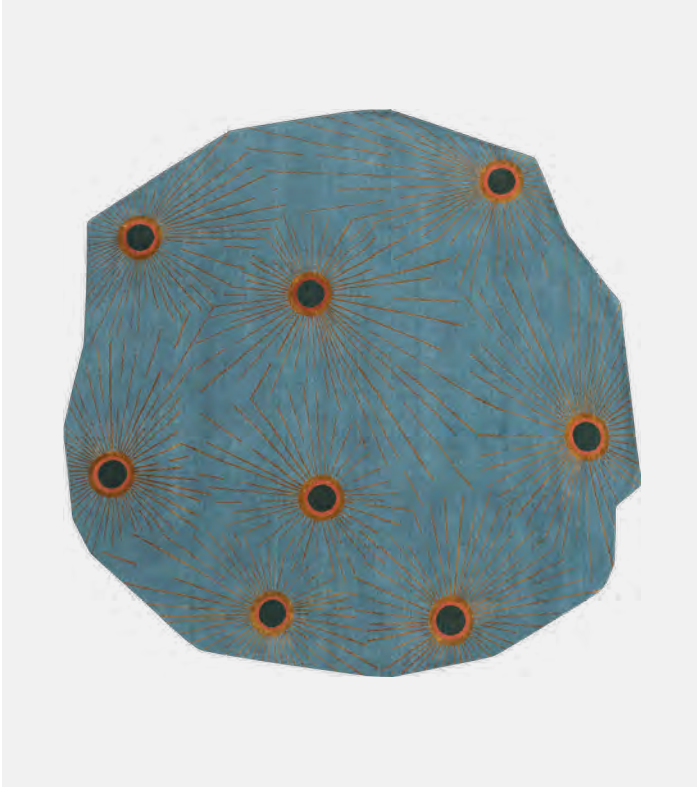
QUALITY: 150 KNOTS



SURYA

COMPOSITION: 75% WOOL / 25% SILK

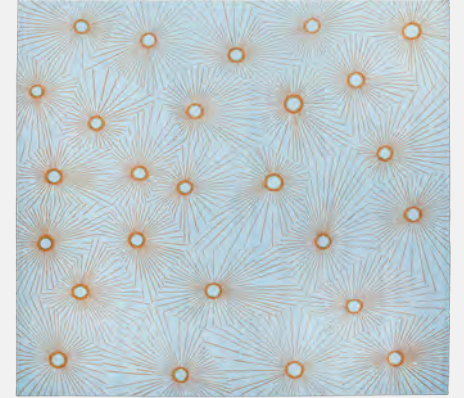
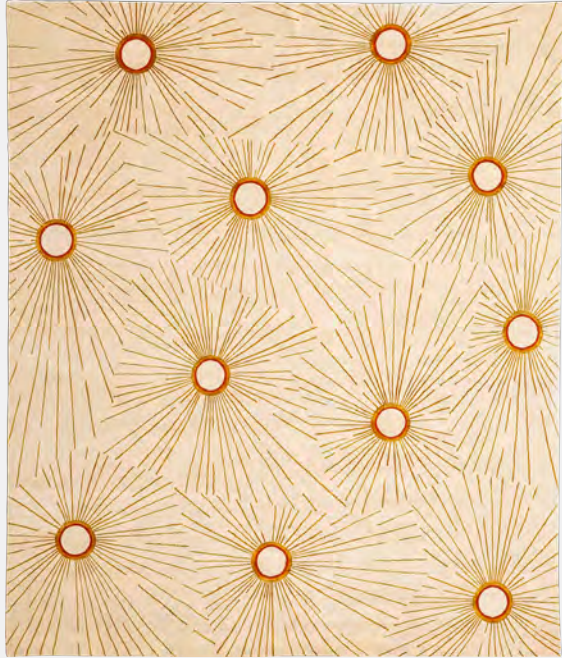
QUALITY: 150 KNOTS



SURYA

COMPOSITION: 75% WOOL / 25% SILK

QUALITY: 150 KNOTS



SURYA

COMPOSITION: 75% WOOL / 25% SILK

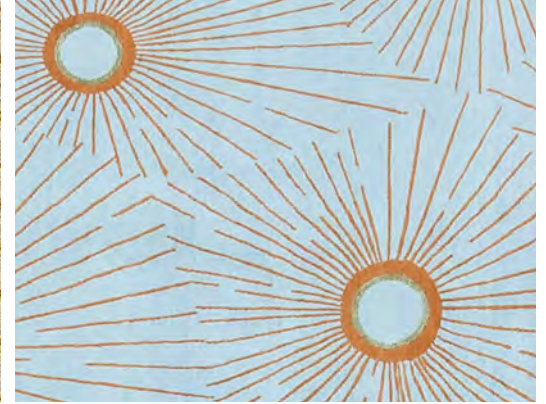
QUALITY: 150 KNOTS



SURYA

COMPOSITION: 75% WOOL / 25% SILK

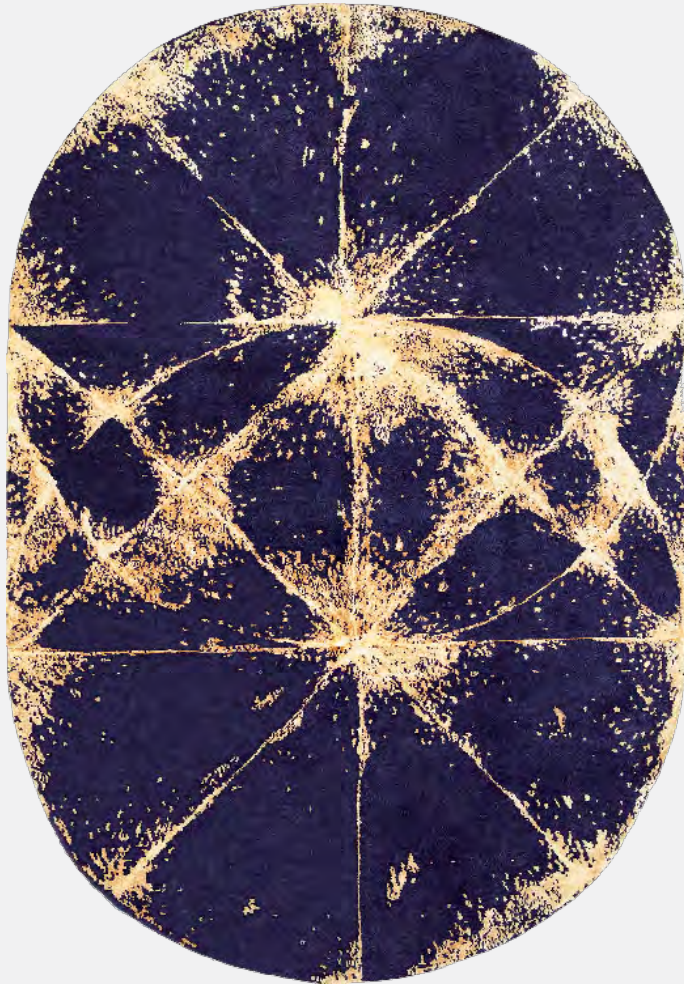
QUALITY: 150 KNOTS



NAKSHATRA

COMPOSITION: 75% WOOL / 25% SILK

QUALITY: 100 KNOTS



NAKSHATRA

COMPOSITION: 75% WOOL / 25% SILK

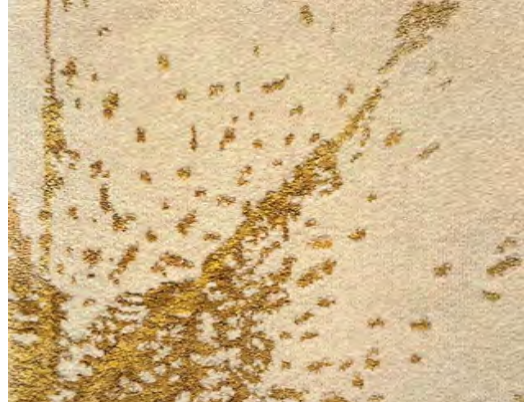
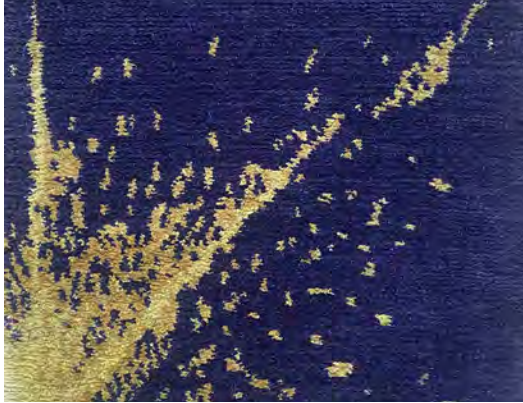
QUALITY: 100 KNOTS



NAKSHATRA

COMPOSITION: 75% WOOL / 25% SILK

QUALITY: 100 KNOTS



ATCHA

COMPOSITION: 50% WOOL / 50% SILK

QUALITY: 125 KNOTS



ATCHA

COMPOSITION: 50% WOOL / 50% SILK

QUALITY: 125 KNOTS



ATCHA

COMPOSITION: 50% WOOL / 50% SILK

QUALITY: 125 KNOTS



ATCHA

COMPOSITION: 50% WOOL / 50% SILK

QUALITY: 125 KNOTS





INFO@ATELIERFEVRIER.COM

WWW.ATELIERFEVRIER.COM